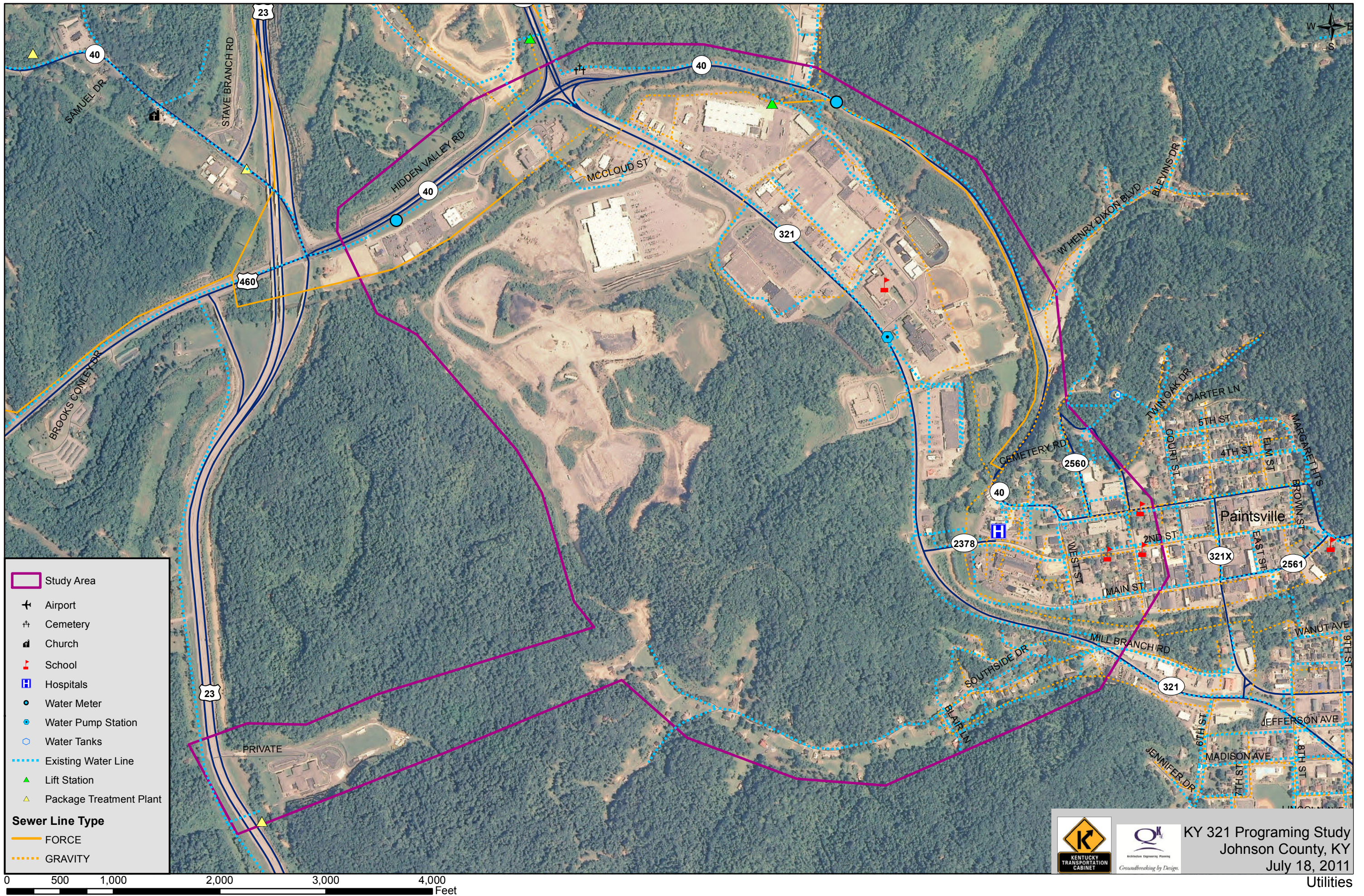


APPENDIX C



Legend

- Study Area
- ✈ Airport
- ⚰ Cemetery
- ⛪ Church
- 🏫 School
- 🏥 Hospitals
- Water Meter
- ⦿ Water Pump Station
- Water Tanks
- Existing Water Line
- ▲ Lift Station
- ▲ Package Treatment Plant

Sewer Line Type

- FORCE
- GRAVITY



KY 321 Programming Study
 Johnson County, KY
 July 18, 2011

From: rdmeecepu
To: Coffey, Annette
Cc: Rick Meece
Subject: Re: Gas, Water, and Wastewater lines
Date: Thursday, September 15, 2011 1:11:12 PM
Attachments: [Paintsville Utilities KY 321 South to KY 321X with main sizes.pdf](#)

Annette,

Due to weather conditions - rain delays in Paintsville, I was able to complete the size information today.

Note that the 24" Water main ties into the 10" Water main @ Fire Hydrant on KY 321 North of the KY 40 Intersection and runs parallel with and 10 LF from the Wastewater Main

If you have any questions or if I missed labeling a crossing location please mark up that area and I will find an answer for your question.

FYI : I pulled up the map with Adobe reader and magnified to 400% it appears to be legible enough for what you needed.

Rick Meece
Engineer - Paintsville Utilities
P.O. Box 630; 137 Main Street
Paintsville, KY 41240-0630
Phone 606.789.2630
Fax 606.789.2631
Email: rdmeecepu@bellsouth.net

From: "Coffey, Annette" <acoffey@qk4.com>
To: rdmeecepu <rdmeecepu@bellsouth.net>
Sent: Thu, September 15, 2011 12:48:05 PM
Subject: RE: Gas, Water, and Wastewater lines

Thank you very much for the information. We will look forward to the size information. We will probably only look at options 500' in each directions on all legs of the KY 40/KY 321 intersection. What you gave me is great.

Annette Coffey, P. E.
Senior Transportation Engineer
Qk4
Architecture Engineering Planning
1410 Versailles Road, Suite 11
Frankfort, KY 40601
Phone (502) 352-2197
Cell (502) 471-9602
Email: acoffey@qk4.com

CONFIDENTIALITY NOTICE: This electronic mail and the materials enclosed with this transmission are the private property of Qk4, and the materials are privileged communications intended solely for the receipt, use, benefit, and information of the intended recipient indicated above. If you are not the intended recipient, you are hereby notified that review, disclosure, copying, distribution, or the taking of action in reliance on the contents of this transmission is strictly prohibited, and may result in legal liability on your part. If you have received this transmission in error, please notify the sender immediately by phone at 502-585-2222 and delete all copies of the message and any attachment. Neither the transmission

of this message or any attachment, nor any error in transmission or misdelivery shall constitute waiver of any applicable legal privilege.

From: rdmecepu [mailto:rdmecepu@bellsouth.net]
Sent: Thursday, September 15, 2011 9:37 AM
To: Coffey, Annette
Cc: Rick Meece
Subject: Re: Gas, Water, and Wastewater lines

Annette,

This is the format I can provide you with for our Utilities. I will have to manually add the line sizes along the KY 321 route and may be next week before I finish.

However, I wanted to find out if this will work for your needs prior to adding the sizes.

We have a new 24" Water main currently being installed North of the KY 321 and KY 40 intersection which is not shown on this map. Will you be working North of this intersection?

I have color coded all of Paintsville Utilities Water (Blue), Gas (Yellow), and Wastewater (Green) per the map LEGEND.

Thanks for a quick reply.

Rick Meece

Engineer - Paintsville Utilities
P.O. Box 630; 137 Main Street
Paintsville, KY 41240-0630
Phone 606.789.2630
Fax 606.789.2631
Email: rdmecepu@bellsouth.net

From: "Coffey, Annette" <acoffey@qk4.com>
To: rdmecepu@bellsouth.net
Cc: "Siria, Bruce" <bsiria@qk4.com>
Sent: Wed, September 14, 2011 10:36:43 AM
Subject: Gas, Water, and Wastewater lines

Mr. Meece,

As a follow-up to our phone conversation, I would like to have locations of the above utilities in and around KY 321 from KY 40 to KY 321X south of Paintsville. We can handle GIS shape files if you have them, if not paper will most certainly do. If we could also get the size and type of the utilities that is also very helpful. Thank you in advance! And below is my information, feel free to call or mail the information also.

Annette Coffey, P. E.
Senior Transportation Engineer

Qk4

Architecture Engineering Planning

1410 Versailles Road, Suite 11

Frankfort, KY 40601

Phone (502) 352-2197

Cell (502) 471-9602

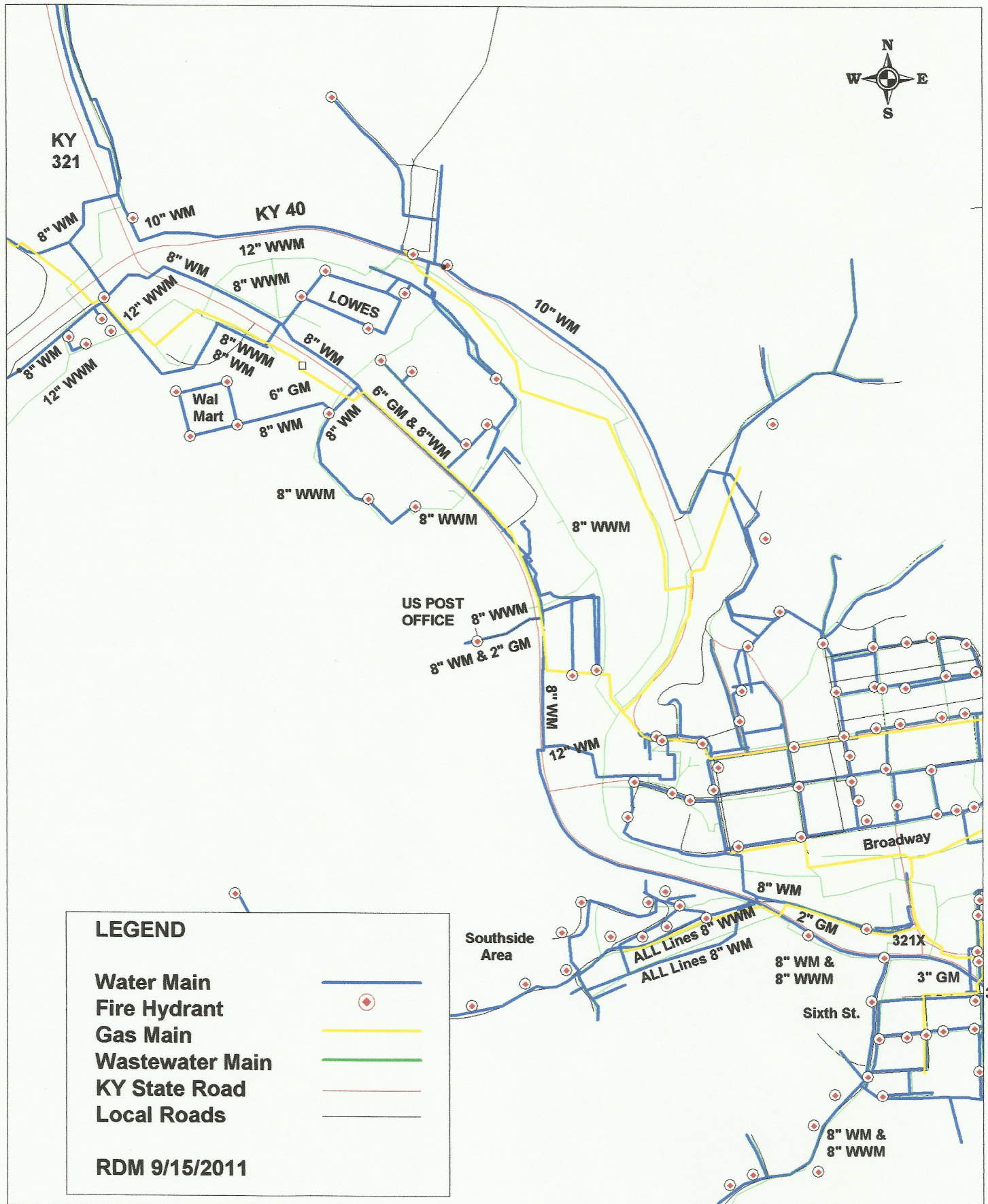
Email: acoffey@qk4.com

CONFIDENTIALITY NOTICE: This electronic mail and the materials enclosed with this transmission are the private property of Qk4, and the materials are privileged communications intended solely for the receipt, use, benefit, and information of the intended recipient indicated above. If you are not the intended recipient, you are hereby notified that review, disclosure, copying, distribution, or the taking of action in reliance on the contents of this transmission is strictly prohibited, and may result in legal liability on your part. If you have received this transmission in error, please notify the sender immediately by phone at 502-585-2222 and delete all copies of the message and any attachment. Neither the transmission of this message or any attachment, nor any error in transmission or misdelivery shall constitute waiver of any applicable legal privilege.

CONFIDENTIALITY NOTICE: This electronic mail and the materials enclosed with this transmission are the private property of Qk4, and the materials are privileged communications intended solely for the receipt, use, benefit, and information of the intended recipient indicated above. If you are not the intended recipient, you are hereby notified that review, disclosure, copying, distribution, or the taking of action in reliance on the contents of this transmission is strictly prohibited, and may result in legal liability on your part. If you have received this transmission in error, please notify the sender immediately by phone at 502-585-2222 and delete all copies of the message and any attachment. Neither the transmission of this message or any attachment, nor any error in transmission or misdelivery shall constitute waiver of any applicable legal privilege.

CONFIDENTIALITY NOTICE: This electronic mail and the materials enclosed with this transmission are the private property of Qk4, and the materials are privileged communications intended solely for the receipt, use, benefit, and information of the intended recipient indicated above. If you are not the intended recipient, you are hereby notified that review, disclosure, copying, distribution, or the taking of action in reliance on the contents of this transmission is strictly prohibited, and may result in legal liability on your part. If you have received this transmission in error, please notify the sender immediately by phone at 502-585-2222 and delete all copies of the message and any attachment. Neither the transmission of this message or any attachment, nor any error in transmission or misdelivery shall constitute waiver of any applicable legal privilege.

Paintsville Utilities Water, Gas, & Wastewater System



LEGEND

- Water Main —
- Fire Hydrant ◆
- Gas Main —
- Wastewater Main —
- KY State Road —
- Local Roads —

RDM 9/15/2011

From: rdmeecepu
To: Coffey, Annette
Cc: Rick Meece
Subject: Re: Gas, Water, and Wastewater lines
Date: Thursday, March 08, 2012 10:29:01 AM
Attachments: [Paintsville Additional Gas Lines 3-8-2012.pdf](#)

Annette,

I have marked up a copy of the map I previously submitted and labeled the gas mains you asked about.

All PE gas lines 2", 3", & 4" with the 6" one is Coated Steel.

I have also indicated a 6" Force Main Waste Water Line is 6" PVC which runs from LOWES toward the Hospital on KY 40.

If you need any further let me know.

Rick Meece

Engineer - Paintsville Utilities
P.O. Box 630; 137 Main Street
Paintsville, KY 41240-0630
Phone 606.789.2630
Fax 606.789.2631
Email: rdmeecepu@bellsouth.net

From: "Coffey, Annette" <acoffey@qk4.com>
To: rdmeecepu <rdmeecepu@bellsouth.net>
Cc: "Siria, Bruce" <bsiria@qk4.com>
Sent: Wed, March 7, 2012 1:19:23 PM
Subject: RE: Gas, Water, and Wastewater lines

Mr. Meece, I have two more questions regarding the map you provided. The gas mains shown that parallels Paint Creek, is it 6" or 2"? Same question for downtown. Thank you for your time.

Annette Coffey, P. E.

Senior Transportation Engineer

Qk4

Architecture Engineering Planning

2225 Lawrenceburg Road, Building C, 2nd Floor

Frankfort, KY 40601

Phone (502) 352-2197

Cell (502) 471-9602

Email: acoffey@qk4.com

CONFIDENTIALITY NOTICE: This electronic mail and the materials enclosed with this transmission are the private property of Qk4, and the materials are privileged communications intended solely for the receipt, use, benefit, and information of the intended recipient indicated above. If you are not the intended recipient, you are hereby notified that review, disclosure, copying, distribution, or the taking of action in reliance on the contents of this transmission is strictly prohibited, and may result in legal liability on your part. If you have received this transmission in error, please notify the sender immediately by phone at 502-585-2222 and delete all copies of the message and any attachment. Neither the transmission of this message or any attachment, nor any error in transmission or misdelivery shall constitute waiver of any applicable legal privilege.

From: rdmeecepu [mailto:rdmeecepu@bellsouth.net]
Sent: Thursday, September 15, 2011 1:11 PM
To: Coffey, Annette
Cc: Rick Meece
Subject: Re: Gas, Water, and Wastewater lines

Annette,

Due to weather conditions - rain delays in Paintsville, I was able to complete the size information today.

Note that the 24" Water main ties into the 10" Water main @ Fire Hydrant on KY 321 North of the KY 40 Intersection and runs parallel with and 10 LF from the Wastewater Main

If you have any questions or if I missed labeling a crossing location please mark up that area and I will find an answer for your question.

FYI : I pulled up the map with Adobe reader and magnified to 400% it appears to be legible enough for what you needed.

Rick Meece

Engineer - Paintsville Utilities
P.O. Box 630; 137 Main Street
Paintsville, KY 41240-0630
Phone 606.789.2630
Fax 606.789.2631
Email: rdmeecepu@bellsouth.net

From: "Coffey, Annette" <acoffey@qk4.com>
To: rdmeecepu <rdmeecepu@bellsouth.net>
Sent: Thu, September 15, 2011 12:48:05 PM
Subject: RE: Gas, Water, and Wastewater lines

Thank you very much for the information. We will look forward to the size information. We will probably only look at options 500' in each directions on all legs of the KY 40/KY 321 intersection. What you gave me is great.

Annette Coffey, P. E.
Senior Transportation Engineer
Qk4
Architecture Engineering Planning
1410 Versailles Road, Suite 11
Frankfort, KY 40601
Phone (502) 352-2197
Cell (502) 471-9602
Email: acoffey@qk4.com

CONFIDENTIALITY NOTICE: This electronic mail and the materials enclosed with this transmission are the private property of Qk4, and the materials are privileged communications intended solely for the receipt, use, benefit, and information of the intended recipient indicated above. If you are not the intended recipient, you are hereby notified that review, disclosure, copying, distribution, or the taking of action in reliance on the contents of this transmission is strictly prohibited, and may result in legal liability on your part. If you have received this transmission in error, please notify the sender immediately by phone at 502-585-2222 and delete all copies of the message and any attachment. Neither the transmission of this message or any attachment, nor any error in transmission or misdelivery shall constitute waiver of any applicable legal privilege.

From: rdmecepu [mailto:rdmecepu@bellsouth.net]
Sent: Thursday, September 15, 2011 9:37 AM
To: Coffey, Annette
Cc: Rick Meece
Subject: Re: Gas, Water, and Wastewater lines

Annette,

This is the format I can provide you with for our Utilities. I will have to manually add the line sizes along the KY 321 route and may be next week before I finish.

However, I wanted to find out if this will work for your needs prior to adding the sizes.

We have a new 24" Water main currently being installed North of the KY 321 and KY 40 intersection which is not shown on this map. Will you be working North of this intersection?

I have color coded all of Paintsville Utilities Water (Blue), Gas (Yellow), and Wastewater (Green) per the map LEGEND.

Thanks for a quick reply.

Rick Meece
Engineer - Paintsville Utilities
P.O. Box 630; 137 Main Street
Paintsville, KY 41240-0630
Phone 606.789.2630
Fax 606.789.2631
Email: rdmecepu@bellsouth.net

From: "Coffey, Annette" <acoffey@qk4.com>
To: rdmecepu@bellsouth.net
Cc: "Siria, Bruce" <bsiria@qk4.com>
Sent: Wed, September 14, 2011 10:36:43 AM
Subject: Gas, Water, and Wastewater lines

Mr. Meece,

As a follow-up to our phone conversation, I would like to have locations of the above utilities in and around KY 321 from KY 40 to KY 321X south of Paintsville. We can handle GIS shape files if you have them, if not paper will most certainly do. If we could also get the size and type of the utilities that is also very helpful. Thank you in advance! And below is my information, feel free to call or mail the information also.

Annette Coffey, P. E.
Senior Transportation Engineer
Qk4
Architecture Engineering Planning
1410 Versailles Road, Suite 11
Frankfort, KY 40601
Phone (502) 352-2197
Cell (502) 471-9602
Email: acoffey@qk4.com

CONFIDENTIALITY NOTICE: This electronic mail and the materials enclosed with this transmission are the private property of Qk4, and the materials are privileged communications intended solely for the receipt, use, benefit, and information of the intended recipient indicated above. If you are not the intended recipient, you are hereby notified that review, disclosure, copying, distribution, or the taking of action in reliance on the contents of this transmission is strictly prohibited, and may result in legal liability on your part. If you have received this transmission in error, please notify the sender immediately by phone at 502-585-2222 and delete all copies of the message and any attachment. Neither the transmission of this message or any attachment, nor any error in transmission or misdelivery shall constitute waiver of any applicable legal privilege.

CONFIDENTIALITY NOTICE: This electronic mail and the materials enclosed with this transmission are the private property of Qk4, and the materials are privileged communications intended solely for the receipt, use, benefit, and information of the intended recipient indicated above. If you are not the intended recipient, you are hereby notified that review, disclosure, copying, distribution, or the taking of action in reliance on the contents of this transmission is strictly prohibited, and may result in legal liability on your part. If you have received this transmission in error, please notify the sender immediately by phone at 502-585-2222 and delete all copies of the message and any attachment. Neither the transmission of this message or any attachment, nor any error in transmission or misdelivery shall constitute waiver of any applicable legal privilege.

CONFIDENTIALITY NOTICE: This electronic mail and the materials enclosed with this transmission are the private property of Qk4, and the materials are privileged communications intended solely for the receipt, use, benefit, and information of the intended recipient indicated above. If you are not the intended recipient, you are hereby notified that review, disclosure, copying, distribution, or the taking of action in reliance on the contents of this transmission is strictly prohibited, and may result in legal liability on your part. If you have received this transmission in error, please notify the sender immediately by phone at 502-585-2222 and delete all copies of the message and any attachment. Neither the transmission of this message or any attachment, nor any error in transmission or misdelivery shall constitute waiver of any applicable legal privilege.

CONFIDENTIALITY NOTICE: This electronic mail and the materials enclosed with this transmission are the private property of Qk4, and the materials are privileged communications intended solely for the receipt, use, benefit, and information of the intended recipient indicated above. If you are not the intended recipient, you are hereby notified that review, disclosure, copying, distribution, or the taking of action in reliance on the contents of this transmission is strictly prohibited, and may result in legal liability on your part. If you have received this transmission in error, please notify the sender immediately by phone at 502-585-2222 and delete all copies of the message and any attachment. Neither the transmission of this message or any attachment, nor any error in transmission or misdelivery shall constitute waiver of any applicable legal privilege.

Paintsville Utilities Water, Gas, & Wastewater System

